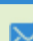



## NEWS

 FORWARD

 CONTACT

 SUBSCRIBE

 DOWNLOAD

## Greenberg Traurig Germany continues expansion by elevating three attorneys to Partner and Counsel and adding a new Counsel from Linklaters

### Nicolai Lagoni is made Partner in the Corporate/M&A group

### Kati Beckmann (Finance), Niklas Conrad (Litigation) and Martin Dressel (Energy) are promoted to Counsel

Dear clients and business partners,

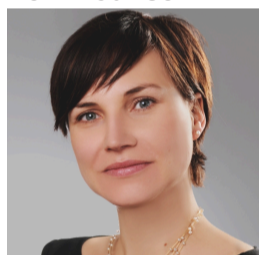
We are very pleased to announce the elevation of one new partner and two new counsel for Greenberg Traurig in Germany. They have been elevated jointly with partners and counsel globally. With these internal promotions, we continue to grow in the strategic practice areas Corporate/M&A, Corporate Finance and Litigation. In addition, we are pleased to announce the lateral hire of a counsel into our Infrastructure & Energy practice.

#### New Partner:



**Nicolai Lagoni** is a Corporate/M&A expert specializing in mergers and acquisitions, with particular emphasis on private equity, corporate law and capital market issues as well as cross-border joint ventures. He advises leading international private equity investors and global corporations.

#### New Counsel:



**Kati Beckmann** is an experienced finance lawyer focusing on acquisition and corporate finance, financial restructurings as well as investment law and financial regulations. She advises domestic as well as international clients in the energy sector, private equity investors and global technology companies as well as banks and alternative lenders.



**Niklas Conrad** is an expert in commercial litigation with a particular focus on complex contractual disputes, post M&A disputes as well as extra judicial dispute resolution. His clients include leading players in the media, technology, and real estate sectors.



**Martin Dressel** recently joined from Linklaters to support the infrastructure group with a particular focus on energy and transportation. He is a specialist in project developments for renewable energy facilities and transactions in the energy sector.

Since the opening of Greenberg Traurig in Germany in October 2015, Nicolai Lagoni is the second promotion to partner already, joining the partnership now as the 14th partner in Germany. With the elevation of Kati Beckmann and Niklas Conrad, and the hiring of Martin Dressel, the German practice now has five counsel to drive growth in key practice areas. And, thanks to the joining of Jesko Stark in 2016, our restructuring and insolvency unit GT Restructuring now comprises of three partners. This development is supported by a growing number of associates strengthening our German and cross-border offering in all practice areas.

On behalf of your Greenberg Traurig team in Germany

#### Dr. Christian Schede

Managing Partner Germany

+ 49 30 700171-120

[christian.schede@gtlaw.com](mailto:christian.schede@gtlaw.com)

#### About Greenberg Traurig

Founded in the U.S. in 1967, Greenberg Traurig is one of the largest international transactional law firms, serving clients from 38 locations across the globe. In Germany, a team of more than 50 attorneys provides legal advice predominantly on transactions in the real estate, technology & communications, media & entertainment, and infrastructure sectors. More information at: [www.gtlaw.de](http://www.gtlaw.de).

This Greenberg Traurig Newsletter is issued for informational purposes only and is not intended to be construed or used as general legal advice nor as a solicitation of any type. Please contact the author(s) or your Greenberg Traurig contact if you have questions regarding the currency of this information. The hiring of a lawyer is an important decision. Before you decide, ask for written information about the lawyer's legal qualifications and experience. Greenberg Traurig is a service mark and trade name of Greenberg Traurig, LLP and Greenberg Traurig, P.A. Images in this advertisement do not depict Greenberg Traurig attorneys, clients, staff or facilities. ©2017 Greenberg Traurig, LLP. All rights reserved.